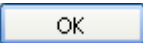
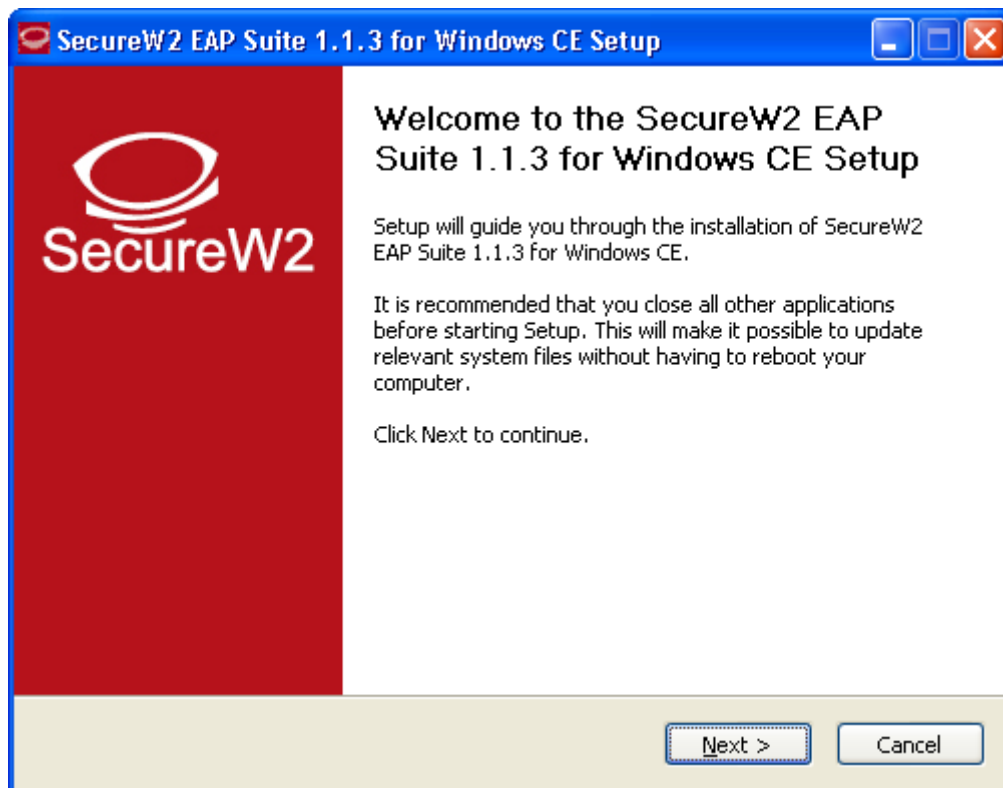


Faça download e instale o Cliente TTLS (securew2)

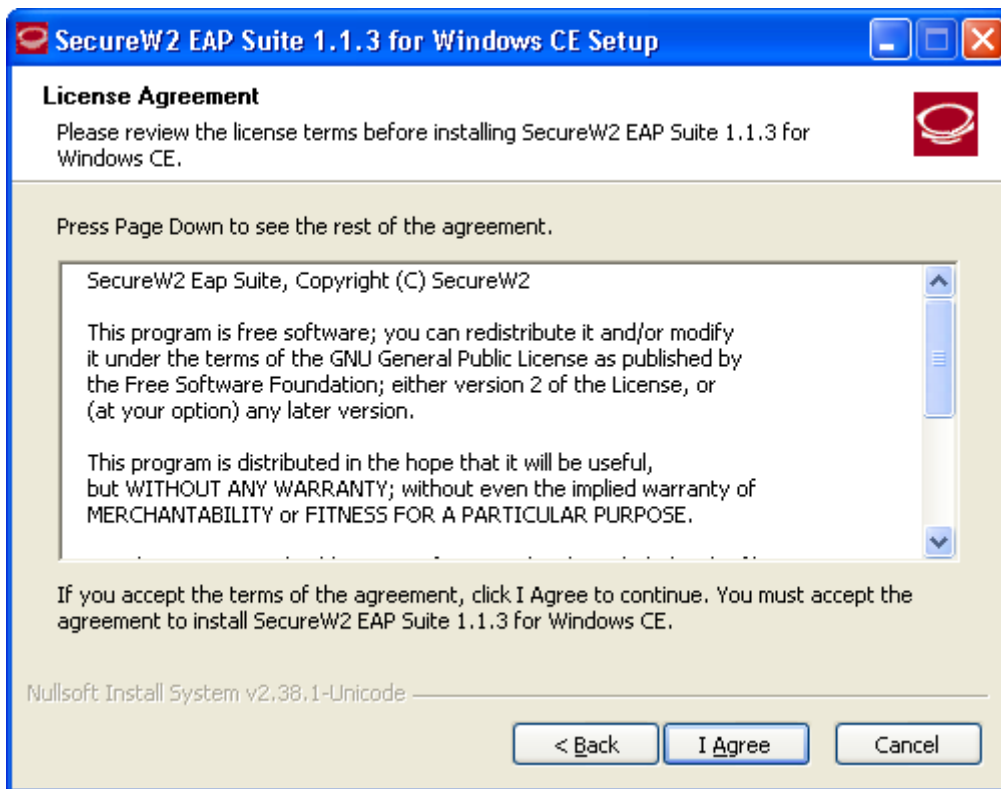
Site: <http://www.securew2.com/node/3>



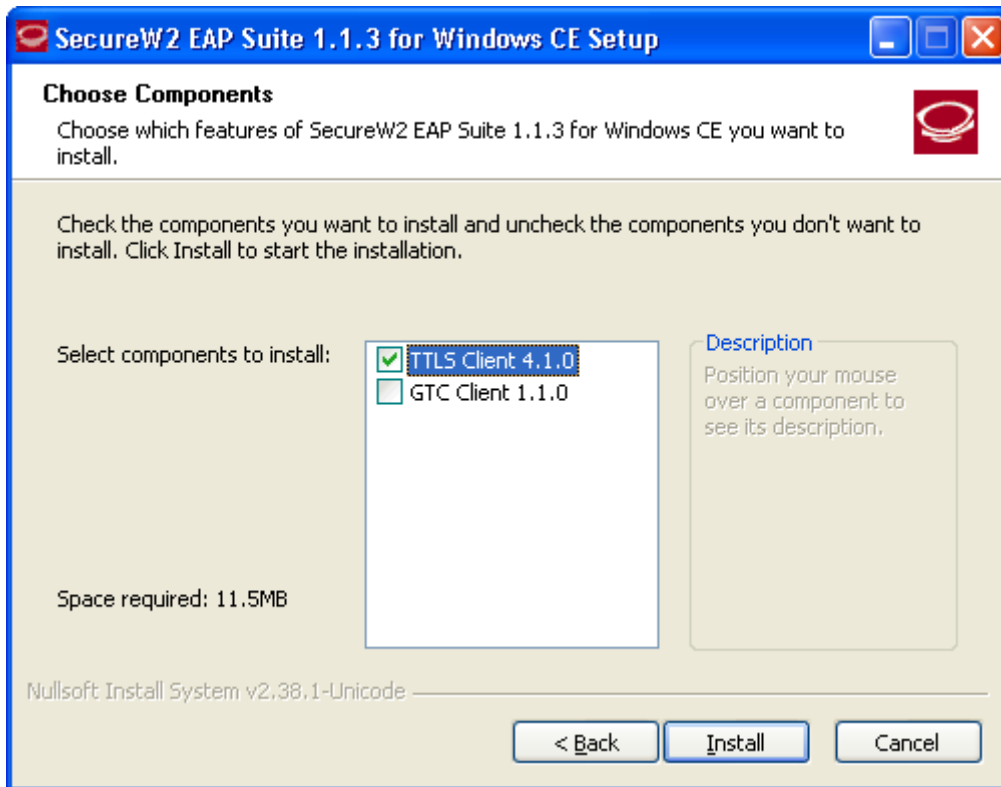
Click no  para continuar.



Click no 

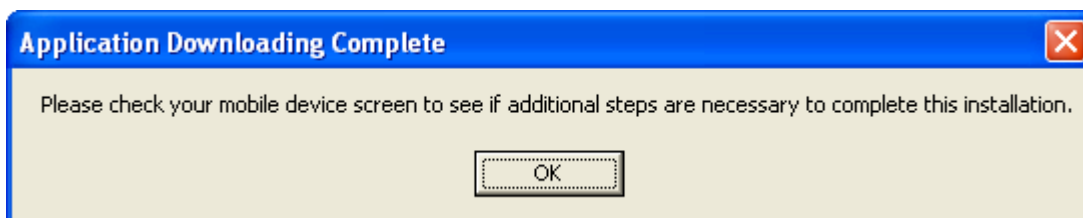


Click on



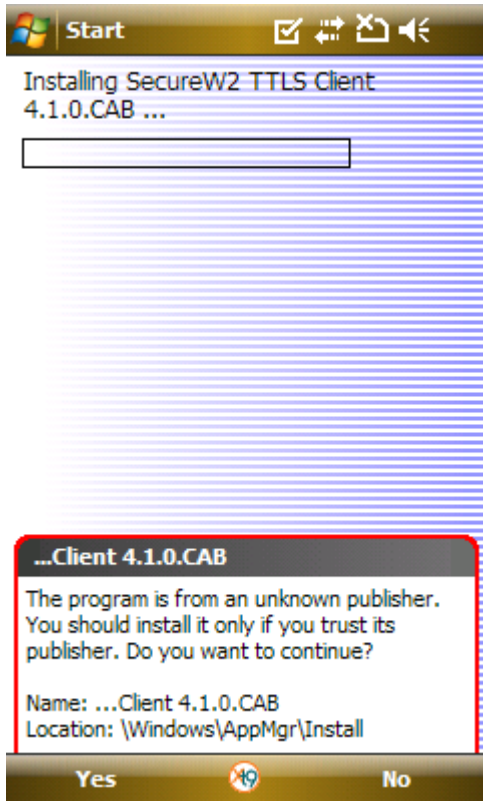
Selecione as opções como na janela.

Click no 

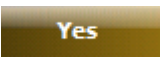


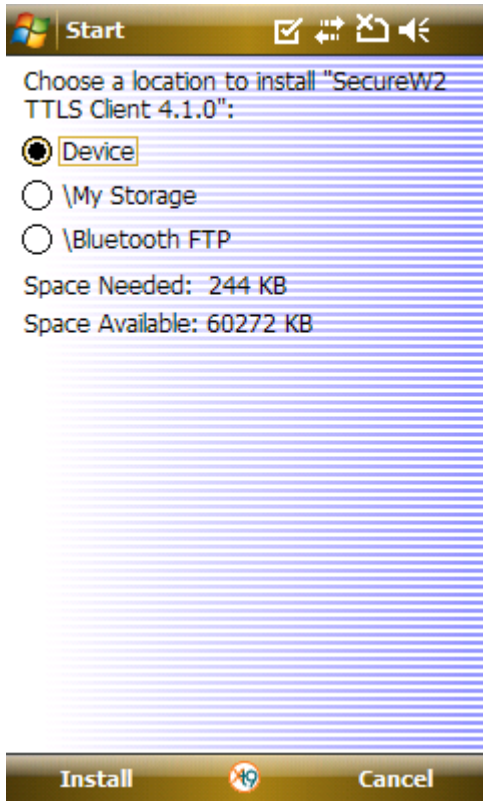
Click no 

Continue a instalação agora no seu PDA

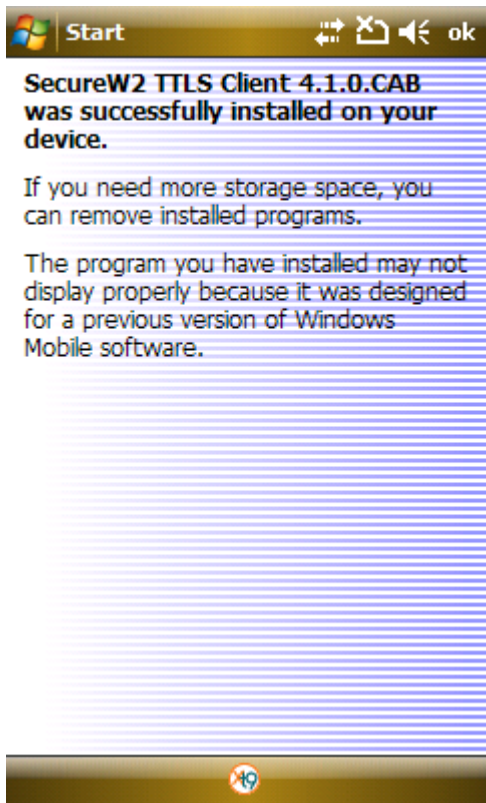


Click no



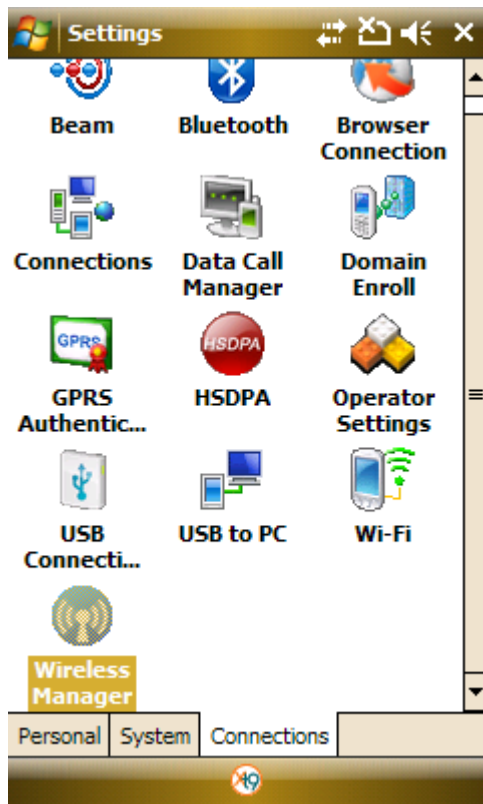


Click no 



Click no

Agora que já tem o cliente TTLS poderá efectuar a configuração do seu dispositivo.



Click em **Settings** -> **Connections** -> **CommManager** e verifique que o módulo está enable.

All [Power Icon]

Wi-Fi [Info Icon] [Off]

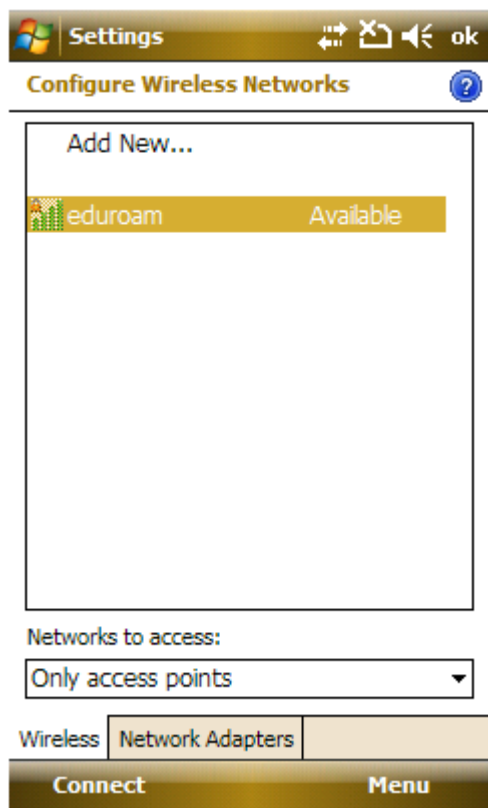
Bluetooth [Info Icon] [Off]

Phone [Phone Icon] [On]

Se estiver disabled (set to **Off**), deverá fazer enable. Click no **Wi-Fi** [Info Icon].



Vá a **Settings** -> **Connections** -> **Wi-Fi**.



Escolha a ligação eduroam.



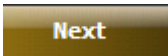
Configure Wireless Network 

Network name:

Connects to:

- This is a hidden network
- This is a device-to-device (ad-hoc) connection



Confirme a sua selecção e click em 

Configure Network Authentication 

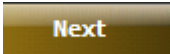
Authentication:

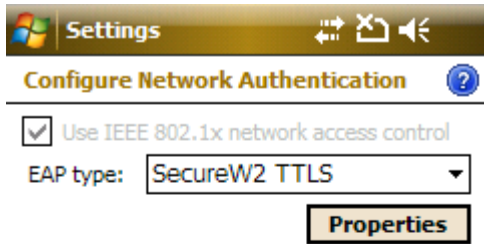
Data Encryption:

The key is automatically provided

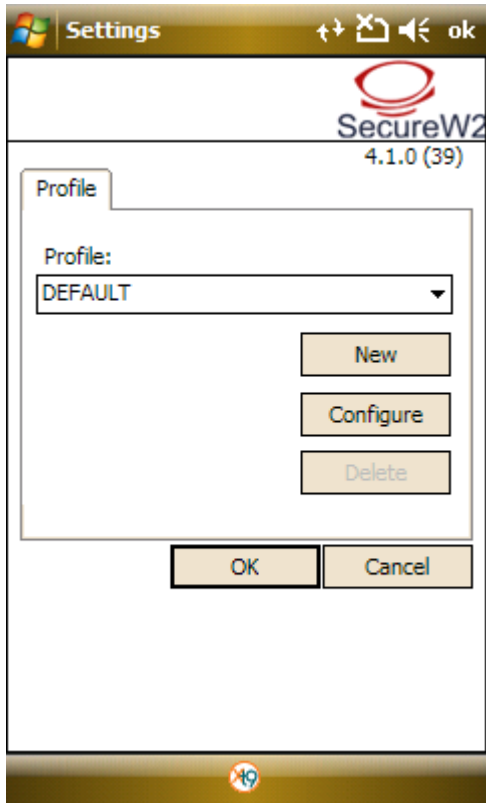
Network key:

Key index:

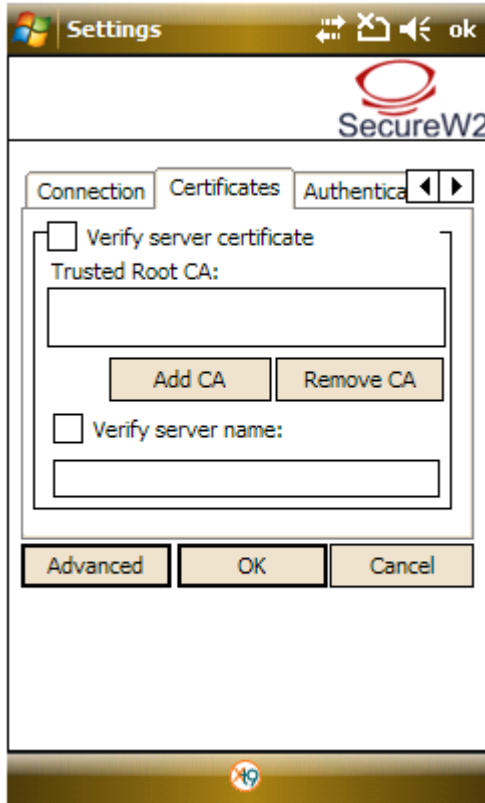
Escolha *WPA* , *TKIP* e click em 



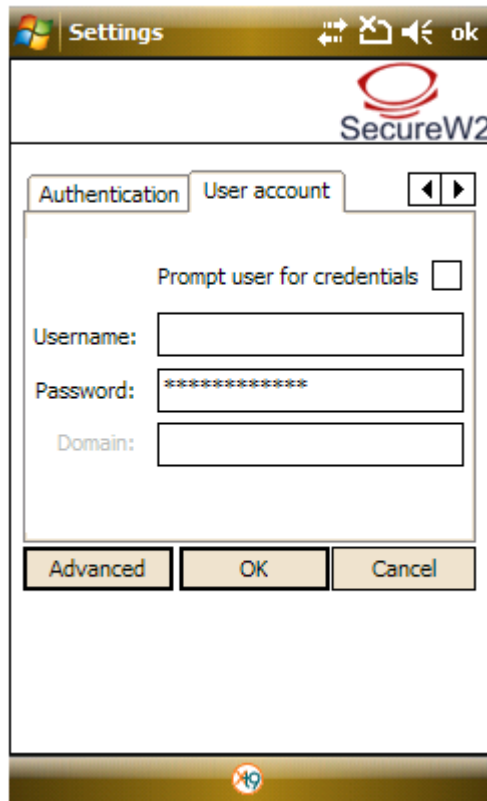
Escolha SecureW2 TTLS. Click em **Properties**



Click em



Preencha esta janela como mostra a figura.



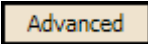
Com os botões  vá até **User Account**.

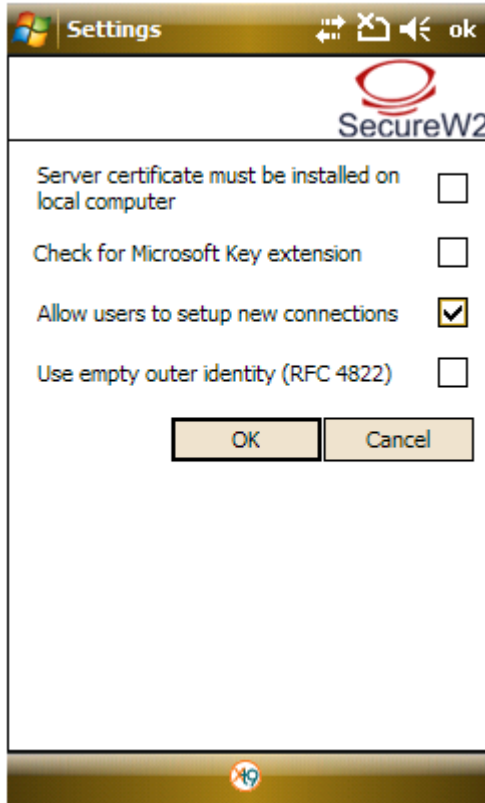
Se for aluno:


No Username deverá colocar por exemplo: a8943@alunos.ubi.pt

Se for funcionário:

No username deverá colocar por exemplo: jtcgmanuel@pessoal.ubi.pt

Click em 



Preencha a janela como mostra na figura e click  duas vezes

Configure Network Authentication 

Use IEEE 802.1x network access control

EAP type:

Properties

Click